



Detector Thin Client

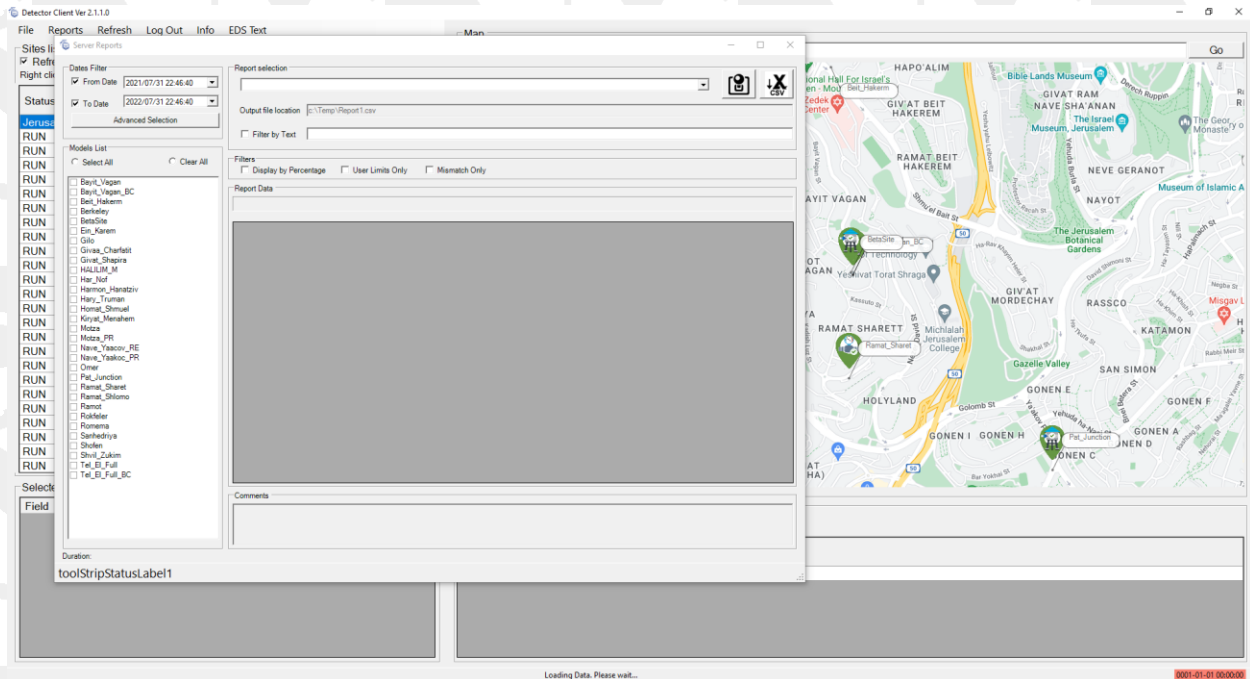
2.1.1.0

Version	Name	Remarks	Date
1.0.0	Adi Brill	Final Document	2022.07.31



1. Main screen takeover is disabled

Main screen no longer takes over when mouse is out of the bounds of the overlapping screen.





2. Alarm Center is always on top

Detector Client Ver 2.1.1.0

File Reports Refresh Log Out Info EDS Text

Site list
Refresh Models Every 5 Minutes
Right click any model to open a menu

Status	ModelName	Last TimeStamp	Alarm Status	Description
Jerusalem				
RUN	Bayit_Vagan	2022-07-31 22:40:00		
RUN	Bayit_Vagan_BC	2022-07-31 22:40:00		
RUN	Beit_Hakerm	2022-07-31 22:40:00		
RUN	Berkeley	2022-07-31 22:40:00		
RUN	BetaSite	2022-07-31 22:40:00		
RUN	Ein_Karem	2022-07-31 22:40:00		
RUN	Gilo	2022-07-31 22:40:00		
RUN	Givaa_Charfatit	2022-07-31 22:40:00		
RUN	Givat_Shapira	2022-07-31 22:40:00		
RUN	HALILIM_M	2022-07-31 22:40:00		
RUN	Har_Nof	2022-07-31 22:40:00		
RUN	Harmon_Hanatzi	2022-07-31 22:40:00		
RUN	Hary_Truman	2022-07-31 22:40:00		
RUN	Homat_Shmuel	2022-07-31 22:40:00		
RUN	Kiryat_Menahem	2022-07-31 22:40:00		
RUN	Motza	2022-07-31 22:40:00		
RUN	Motza_PR	2022-07-31 22:40:00		
RUN	Nave_Yaacov_RE	2022-07-31 22:40:00		
RUN	Nave_Yaacov_PR	2022-07-31 22:40:00		
RUN	Omer	2022-07-31 22:40:00		
RUN	Pat_Junction	2022-07-31 22:40:00		
RUN	Ramat_Sharet	2022-07-31 22:40:00		
RUN	Ramat_Shloimo	2022-07-31 22:40:00		
RUN	Ramat	2022-07-31 22:40:00		

Model Severity AlarmType AlarmKey StartTime TriggerTime Description

Selected site data

Field	Units	Data
-------	-------	------

Map

search by address or coordinates...

Events

Display Pending Detectors

Alarm Type	Key	Start Time	Trigger Time	Description
------------	-----	------------	--------------	-------------

Loading Data. Please wait...

2022-01-01 00:00:00



3. Alarm Center screen expansion works correctly

Expanding and reducing the alarm size window works as it should.

The screenshot displays the Detector Thin Client 2.1.1.0 interface. The main window is titled "Detector Client Ver 2.1.1.0" and includes a menu bar with "File", "Reports", "Refresh", "Log Out", "Info", and "EDS Text". Below the menu bar, there is a "Site list" section with a "Refresh Models Every 5 Minutes" button and a note: "Right click any model to open a menu". The "Site list" table shows a list of sites with columns for "Status", "ModelName", "Last TimeStamp", "Alarm Status", and "Description". The "Alarm Center" window is expanded, showing a table with columns: "Model", "Severity", "AlarmType", "AlarmKey", "StarTime", "TriggerTime", and "Description". The "Events" section is also visible, showing a table with columns: "Alarm Type", "Key", "Start Time", "Trigger Time", and "Description". The "Selected site data" section is at the bottom left, showing a table with columns: "Field", "Units", and "Data". The "Map" section is on the right, showing a map of Jerusalem with various locations marked. The "Loading Data. Please wait..." message is at the bottom center, and the "2021-01-01 00:00:00" timestamp is at the bottom right.

Status	ModelName	Last TimeStamp	Alarm Status	Description
RUN	Bayit_Vagan	2022-07-31 22:40:00		
RUN	Bayit_Vagan_BC	2022-07-31 22:40:00		
RUN	Beit_Hakerm	2022-07-31 22:40:00		
RUN	Berkeley	2022-07-31 22:40:00		
RUN	BetaSite	2022-07-31 22:40:00		
RUN	Ein_Karem	2022-07-31 22:40:00		
RUN	Gilo	2022-07-31 22:40:00		
RUN	Givaa_Charlatit	2022-07-31 22:40:00		
RUN	Givat_Shapira	2022-07-31 22:40:00		
RUN	HALILIM_M	2022-07-31 22:40:00		
RUN	Har_Nof	2022-07-31 22:40:00		
RUN	Harmon_Hanatzi	2022-07-31 22:40:00		
RUN	Hary_Truman	2022-07-31 22:40:00		
RUN	Homat_Shmuel	2022-07-31 22:40:00		
RUN	Kiryat_Menahem	2022-07-31 22:40:00		
RUN	Motza	2022-07-31 22:40:00		
RUN	Motza_PR	2022-07-31 22:40:00		
RUN	Nave_Yaacov_RE	2022-07-31 22:40:00		
RUN	Nave_Yaacov_PR	2022-07-31 22:40:00		
RUN	Omer	2022-07-31 22:40:00		
RUN	Pat_Junction	2022-07-31 22:40:00		
RUN	Ramat_Sharet	2022-07-31 22:40:00		
RUN	Ramat_Shloimo	2022-07-31 22:40:00		
RUN	Ramat	2022-07-31 22:40:00		

Model	Severity	AlarmType	AlarmKey	StarTime	TriggerTime	Description
-------	----------	-----------	----------	----------	-------------	-------------

Alarm Type	Key	Start Time	Trigger Time	Description
------------	-----	------------	--------------	-------------



4. All model screens are located at the front when clicked

Opening a window from the right click model menu will display this screen on top always (used to hide behind the main screen).

Sites list

Status	ModelName	LastTimeStamp	Alarm Status	Description
RUN	Jerusalem			
RUN	Bayit	-31 22:40:00		בית וגן
RUN	Bayit	-31 22:40:00		בית וגן דפני
RUN	Bait	-31 22:40:00		בית הכנסת
RUN	Berke	-31 22:40:00		ברקלי
RUN	Betas	-31 22:40:00		בטא סיטי
RUN	Ein_K	-31 22:40:00		עין כרם
RUN	Gilo	-31 22:40:00		גילה
RUN	Givat	-31 22:40:00		גבעה ערפית
RUN	Givat	-31 22:40:00		גבעה שפירא
RUN	HALI	-31 22:40:00		חלילים
RUN	Har_I	-31 22:40:00		הר הר נוף
RUN	Harmon	2022-07-31 22:40:00		ארמון הנציב
RUN	Hary_Truman	2022-07-31 22:40:00		הארי טרומן
RUN	Homat_Shmuel	2022-07-31 22:40:00		חומת שמואל
RUN	Kiryat_Menahem	2022-07-31 22:40:00		קריית מנחם
RUN	Motza	2022-07-31 22:40:00		מוצא
RUN	Motza_PR	2022-07-31 22:40:00		מוצא חקלאי 2
RUN	Nave_Yaacov_RE	2022-07-31 22:40:00		נווה יעקוב מאגר
RUN	Nave_Yaacov_PR	2022-07-31 22:40:00		נווה יעקוב חק
RUN	Omer	2022-07-31 22:40:00		עומר
RUN	Pat_Junction	2022-07-31 22:40:00		צומת פת
RUN	Ramat_Sharet	2022-07-31 22:40:00		רמת שרת
RUN	Ramat_Shloho	2022-07-31 22:40:00		רמת שלמה
RUN	Ramat	2022-07-31 22:40:00		רמות

Selected site data

Field	Units	Data
TimeStamp	*	2022-07-31 10:45:00 PM
CL	mg/L	0.35
TU	NTU	0.51
pH	SU	7.55
PR	Meter	6.00
FL	FL-MS/H	503.00
LT	LT-CM	579.00
P1	*	0.00
P2	*	0.00
P3	*	0.00

Map

Search by address or coordinates...

Events

☐ Display Pending Detectors

Alarm Type	Key	Start Time	Trigger Time	Description
------------	-----	------------	--------------	-------------

Loading Data. Please wait...

2022-07-31 00:00:00

10:45 PM 2022-07-31



5. Right Click on domain instead of Model displays error message

Right clicking a domain name from the list does not allow a model right click menu to open.

Instead it displays an error message and requests for a model selection.

The screenshot displays the Detector Thin Client 2.1.1.0 interface. On the left, a 'Sites list' table shows various models and their status. The 'Selected site data' table is empty. The main area features a map of Jerusalem with a search bar and a 'Go' button. A dialog box titled 'Please select a model.' is overlaid on the map, with an 'OK' button. The bottom right corner shows a status bar with the text 'Loading Data. Please wait...' and a timestamp of 10:50 PM on 2022-07-31.

Status	ModelName	Last TimeStamp	Alarm Status	Description
RUN	Bayit_Vagan	2022-07-31 22:45:00		בית וגן
RUN	Bayit_Vagan_BC	2022-07-31 22:45:00		בית וגן לפני ה
RUN	Beit_Hakerm	2022-07-31 22:45:00		בית הכרם
RUN	Berkely	2022-07-31 22:45:00		ברקלי
RUN	BetaSite	2022-07-31 22:45:00		ביטא סיטי
RUN	Ein_Karem	2022-07-31 22:45:00		עין כרם
RUN	Gilo	2022-07-31 22:45:00		גילה
RUN	Givaa_Charfatit	2022-07-31 22:45:00		גבעה צרפתית
RUN	Givat_Shapira	2022-07-31 22:45:00		גבעה שפירא
RUN	HALILIM_M	2022-07-31 22:45:00		חלילים
RUN	Har_Nof	2022-07-31 22:45:00		הר נוף
RUN	Harmon_Hanatzi	2022-07-31 22:45:00		הרמון הנציב
RUN	Hary_Truman	2022-07-31 22:45:00		הארי טרומן
RUN	Homat_Shemuel	2022-07-31 22:45:00		חומת שמואל
RUN	Kiryat_Menahem	2022-07-31 22:42:00		קריית מנחם
RUN	Motza	2022-07-31 22:45:00		מוצא
RUN	Motza_PR	2022-07-31 22:45:00		מוצא קטסין ל
RUN	Nave_Yaacov_RE	2022-07-31 22:45:00		נווה יעקוב מאגר
RUN	Nave_Yaacov_PR	2022-07-31 22:45:00		נווה יעקוב חק
RUN	Omer	2022-07-31 22:45:00		עומר
RUN	Pat_Junction	2022-07-31 22:45:00		פזמות פח
RUN	Ramat_Sharet	2022-07-31 22:45:00		רמת שרת
RUN	Ramat_Shloimo	2022-07-31 22:45:00		רמת שלמה
RUN	Ramat	2022-07-31 22:45:00		רמות



6. Report 1 and report 9 show the same numbers in the relative columns

Report 1 and report 9 of server level contain the same filters and display the same numbers in the total (1) and Triggered (9) columns.

Dates Filter

☒ From Date 2021/06/01 00:00:00

☒ To Date 2022/07/01 00:00:00

Advanced Selection

Models List

☒ Select All ☐ Clear All

- ☒ Bayit_Vagan
- ☒ Bayit_Vagan_BC
- ☒ Beit_Hakerm
- ☒ Berkeley
- ☒ BetaSite
- ☒ Ein_Karem
- ☒ Gilo
- ☒ Givaa_Charfatit
- ☒ Givat_Shapira
- ☒ HALILIM_M
- ☒ Har_Nof
- ☒ Harmon_Hanatzi
- ☒ Hary_Truman
- ☒ Homat_Shmu
- ☒ Kiryat_Menahem
- ☒ Motza
- ☒ Motza_PR
- ☒ Nave_Yaacov_RE
- ☒ Nave_Yaakoc_PR
- ☒ Omer
- ☒ Pat_Junction
- ☒ Ramat_Sharet
- ☒ Ramat_Shlo
- ☒ Ramot
- ☒ Rokfeler
- ☒ Romema
- ☒ Sanhedriya
- ☒ Shofen
- ☒ Shvil_Zukim
- ☒ Tel_EI_Full
- ☒ Tel_EI_Full_BC

Duration: 21.112155 seconds

Report selection

1 - Events count per model

Output file location c:\EDSRe

☐ Filter by Text

Filters

☐ Display by Percentage

Report Data

Report number: 1 - Event

Model Name	Total	Triggered
Bayit_Vagan	411	3
Bayit_Vagan_BC	477	3
Beit_Hakerm	130	4
Berkeley	158	2
BetaSite	165	1
Ein_Karem	144	9
Gilo	133	1
Givaa_Charfatit	275	5
Givat_Shapira	298	8
HALILIM_M	179	3
Har_Nof	607	1
Harmon_Hanatzi	181	9
Hary_Truman	177	1
Homat_Shmu	307	8
Kiryat_Menahem	222	6
Motza	99	2
Motza_PR	143	5
Nave_Yaacov_RE	341	6
Nave_Yaakoc_PR	275	9
Omer	159	8
Pat_Junction	16	1
Ramat_Sharet	427	7

Comments

96% Done. Process Done.

Model Name	Total Event	Before Trigger	% Before	Triggered
Bayit_Vagan	411	0	0.0%	411
Bayit_Vagan_BC	477	0	0.0%	477
Beit_Hakerm	130	0	0.0%	130
Berkeley	158	0	0.0%	158
BetaSite	165	0	0.0%	165
Ein_Karem	144	0	0.0%	144
Gilo	133	0	0.0%	133
Givaa_Charfatit	275	0	0.0%	275
Givat_Shapira	298	0	0.0%	298
HALILIM_M	179	0	0.0%	179
Har_Nof	607	0	0.0%	607
Harmon_Hanatzi	181	0	0.0%	181
Hary_Truman	177	0	0.0%	177
Homat_Shmu	307	0	0.0%	307
Kiryat_Menahem	222	0	0.0%	222
Motza	99	0	0.0%	99
Motza_PR	143	0	0.0%	143
Nave_Yaacov_RE	341	0	0.0%	341
Nave_Yaakoc_PR	275	0	0.0%	275
Omer	159	0	0.0%	159
Pat_Junction	16	0	0.0%	16
Ramat_Sharet	427	0	0.0%	427

Comments



7. Report 4 current week gray background is displayed correctly

8